



**KNOWLES  
PRIMARY SCHOOL**

# **Welcome to Knowles Primary School**

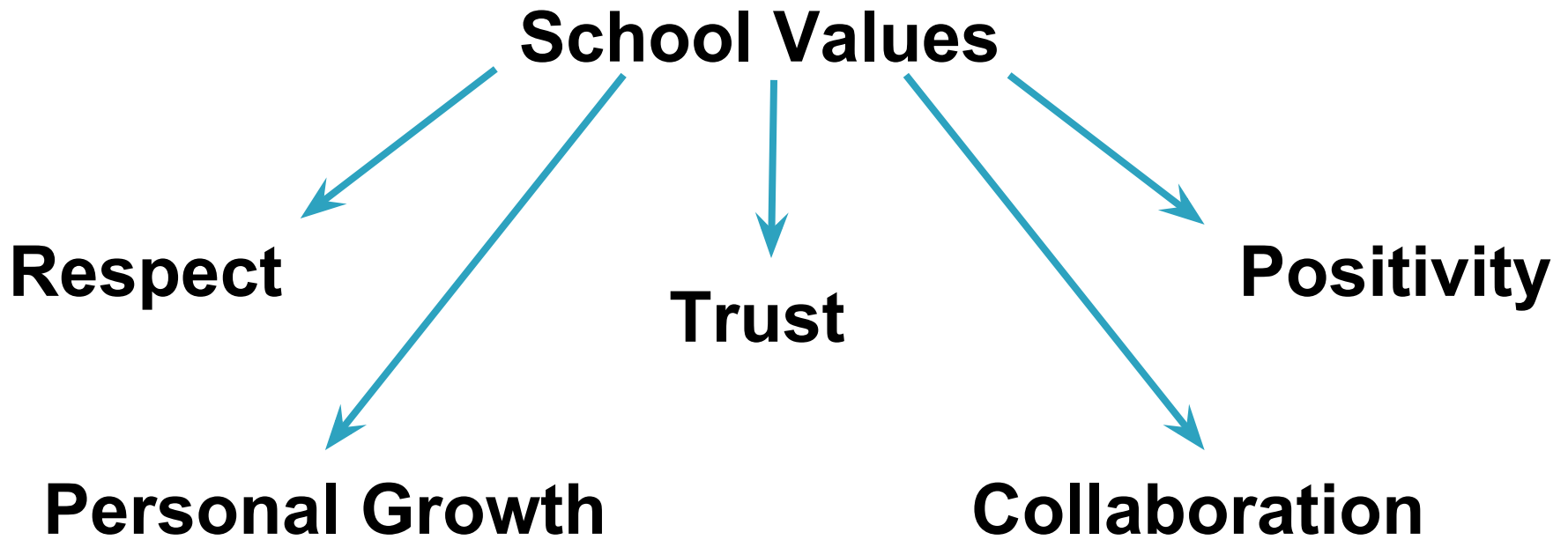
## **Year 6 Meeting for Parents**

**Thursday 19<sup>th</sup> October 2017**

## Our meeting today:

- ▶ Our Staff
- ▶ Our School Values
- ▶ The Year 6 Curriculum & Trips
- ▶ Parents as Partners
- ▶ Our Year 6 Area
- ▶ The School Day & Attendance
- ▶ Uniform
- ▶ Behaviour
- ▶ Diary Dates
- ▶ SATs
- ▶ Homework
- ▶ Any questions????

<b>Head Teacher</b>	<b>Mrs Sarah Rice</b>
Deputy Head Teacher	Miss Leah Dobson
Assistant Head Teachers	Miss Charlotte Purves Miss Sarah Hilton
Maple Class Teacher	Miss Beth Jeffs
Sycamore Class Teacher	Mr Richard Jenkins
Teaching Assistants	Mrs Karen Downing Mrs Rima Kahtun
HLTA	Mrs Helen Loftus
Learning Mentors	Doll Downard Sam Searle Sorrell Yates



# The Year 6 Curriculum



## Cornerstones

### Engage

Introduce the theme  
Research and questions  
Start with a bang

### Develop

Improve knowledge  
Practise new skills  
Explore, make, do

### Innovate

Be inspired  
Solve problems  
Make it real

### Express

Perform and inform  
Share and evaluate  
Celebrate success

# The Year 6 Curriculum

## Topic 1



### Stargazers

- **Science: The Planets, Gravity and Light**
- **DT: Rockets**
- **History: Roman Gods and the links to the planets and biographies of famous scientists like Galileo**
- **Geography: Aerial images of Earth**
- **Computing: Coding**

# The Year 6 Curriculum

## Topic 2



### From Across The Sea

- **Science: Properties and changing materials**
- **DT and Art: Sewing**
- **History: Vikings**
- **Geography: Scandinavia**
- **Computing: Gaming characters**

# The Year 6 Curriculum

## Topic 3



### Dragonology

- **Science:** Evolution and inheritance, animal life cycles including humans.
- **Art:** Prints and Carvings
- **Geography:** Plot co-ordinates
- **Computing:** Downloading images, emails and presentations.



# The Year 6 Curriculum

## Topic 4



### A Child's War

- DT: Cooking
- History: Local history study of Bletchley Park, Blitz, Homes.
- PSHE: Prejudice/ discrimination
- Geography: Sketch maps
- Computing: Digital timelines

# The Year 6 Curriculum

## Short Topic



### Titanic

- Science: Circuits
- History: Titanic



**KNOWLES  
PRIMARY SCHOOL**

## **Trips**

BRIDGE BUILDER  
trust • mk



Christmas and Easter Cracked



Space Centre

We will have visits to the school from Secondary Schools.

## Parents as Partners

**You can communicate with us in the following ways:**

- ▶ Informal chat with your child's class teacher or key worker
- ▶ Make an appointment with your child's class teacher or one of us.
- ▶ Reading records
- ▶ Termly parents evenings appointments

## Our Year 6 Area

- ▶ Maple and Sycamore class.
- ▶ Shared area for group activities.
- ▶ No Changing Rooms.
- ▶ Individual Lockers.
- ▶ Year 6 door for lining up and collecting from.

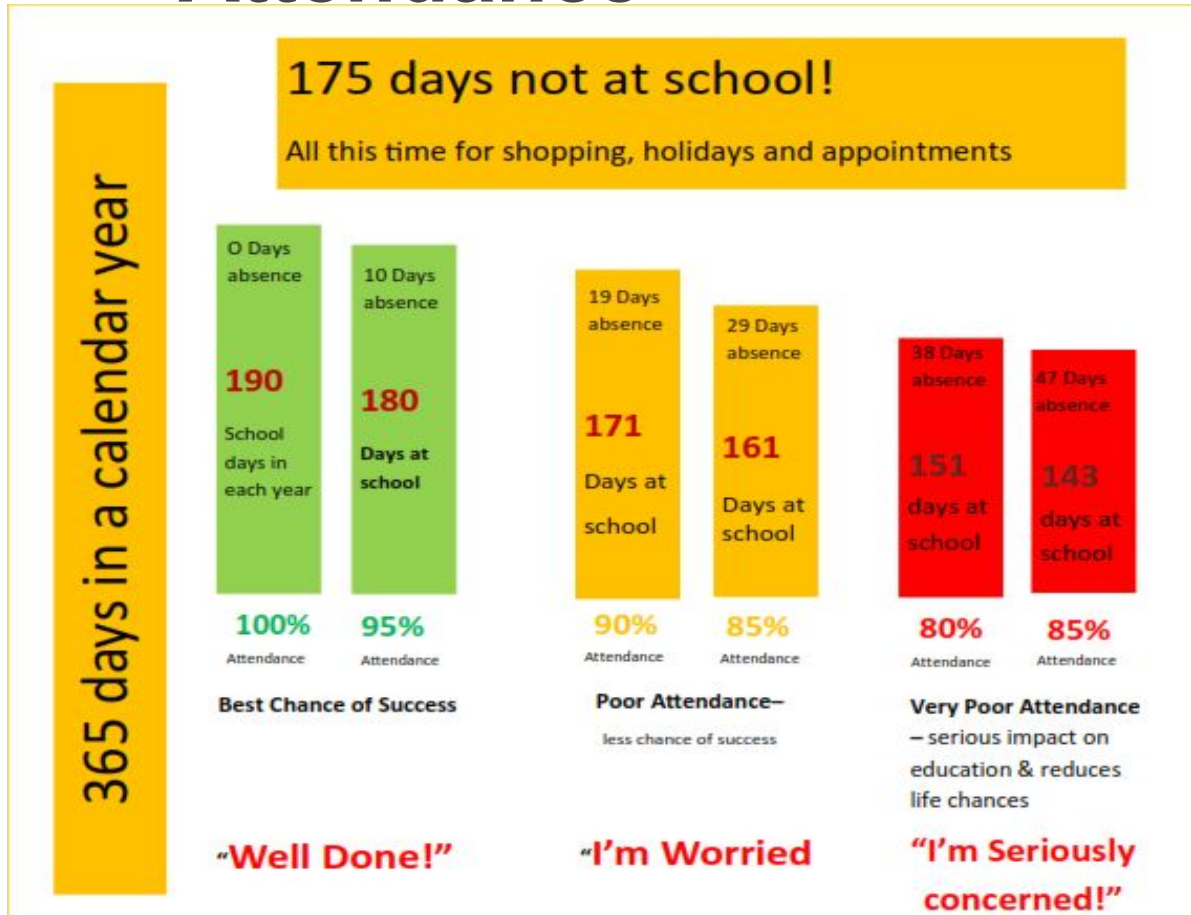
# The school day

<b>Doors Open</b>	<b>8.40am</b>
<b>Spellings and circle time</b>	8.40 - 9.00 am
<b>Register</b>	9.00am
<b>Session 1</b>	9.05am-9.30am
<b>Session 2</b>	9.30am-10.00am
<b>Literacy</b>	10.00 - 11.10 am
<b>Break Time</b>	11.10am-11.25am
<b>Maths</b>	11.25 am - 12.40 pm
<b>Lunch Time</b>	12.40pm-1.25pm
<b>Handwriting</b>	1.25pm-1:45pm
<b>Afternoon Session</b>	1:45pm-2:45pm
<b>Assembly</b>	2:45pm-3:-5pm
<b>Home Time</b>	<b>3.15pm</b>

# Attendance

Please call us if  
your child is ill  
and will not be  
in school.

We monitor  
attendance very  
carefully.



### **Winter Uniform : Autumn And Spring Terms**

- + Grey trousers, pinafore dress or skirt
- + White shirt, blouse or white polo shirt
- + Blue sweatshirt (Bought from KPS or Maisies)
- + Plain flat dark shoes



### **Summer Uniform : Summer Term**

- + Grey shorts
- + White polo shirt
- + Blue checked dress
- + Plain flat dark shoes or sandals



# Uniform

## **PE Kit**

- + Shorts
- + Plain blue t-shirt
- + Trainers and plimsolls

## **Jewellery**

Watches and stud earrings only may be worn in School. No other earrings or other jewellery is permitted. For safety reasons children may be asked to remove watches and earrings for games and PE sessions. In Foundation and Key Stage 1 children are asked to wear micro-pore tape to cover the earrings. In Key Stage 2 children are asked to remove jewellery and we recommend that children do not wear it on PE days. The School will not take responsibility for any of the above items, or any other personal property brought into School.

## Uniform – How to order

- ▶ Any items with the school logo on can be purchased direct from Knowles Primary School.
- ▶ Pop into Maisies, 60/64 Church Street, Wolverton, MK12 5JW (Tel: 01908 313313) to buy everything from underwear to a sweatshirt.
- ▶ Items below, and other school wear, can be purchased on-line at [www.school-kit.co.uk](http://www.school-kit.co.uk), a delivery charge will be incurred. The goods can be delivered to your home address, or school.
- ▶ Local supermarkets.

**Please make sure all items are named!!!**



# Website



# KNOWLES PRIMARY SCHOOL

# www.knowlesprimaryschool.org.uk



Knowles Primary School | Living Our Learning - Windows Internet Explorer

http://knowlesprimaryschool.org.uk/

SparkleBox Web Search

Knowles Primary School | Living Our Learning

KNOWLES PRIMARY SCHOOL

Home Vision Our School Classes Resources Contact

**OUR CLASSES**

- Foundation** Click To Visit Foundation
- Year One & Two** Click To Visit Year 1 & 2
- Year Three & Four** Click To Visit Year 3 & 4

**Message From The Head Teacher**

Dear Parents and Carers and visitors to our site,  
Staff and Governors welcome you to Knowles Primary School. Two local and successful

**Attendance Is Important**

Done

Internet | Protected Mode: Off

16:21  
25/06/2013

# Snacks

- ▶ Snacks should be provided from home if desired.
- ▶ Snacks will only be allowed to be fruit or vegetables.
- ▶ No chocolate bars and sweets are allowed to be brought onto the school site by the children.
- ▶ If a child would like a water bottle this needs to be brought in from home. This should be separate to their lunch time drink. This can only be water.



# Behaviour

Expected

We ask for help and accept help from others.  
We think about what we need.  
We stay calm and don't allow things to make us cross.

We talk to each other.  
We play with others.  
We learn from each other.

We are happy about the things we do well and the things  
that other people do well.

We will try new things.  
We aren't afraid to make mistakes because we can learn  
from them.

We set ourselves targets.

We share what has worked.  
We all help each other do what is right.

We listen to others and make all people feel important.  
We welcome new people and help them.  
We find the things we need to help ourselves.

We set a good example for all others in the school and  
outside.  
We make the school an enjoyable place to be for everyone

Expected

Needs improving	<p>Calling out consistently            Answering back            Rudeness            Distracting others from learning            Swearing purposefully at others            Being unkind            Not trying your hardest            Refusal to follow instructions</p>	Needs improving
Poor	<p>Continued inappropriate responses            Walking out of class            Refusing to listen to instructions            Refusing to complete work            Disrupting the class            Swearing at others            Persistent yellow behaviour</p>	Poor
Extreme	<p>Physical aggression            Threatening behaviour            Damage of property            Bullying            Unsafe behaviour putting themselves or others at            serious risk of harm            Stealing            Extreme prejudice based incidents            Bringing weapons into school            Persistent poor behaviour</p>	Extreme

## Diary Dates

- ▶ 24<sup>th</sup> October - Parents Evening (3:30pm – 8.00pm)
- ▶ 25<sup>th</sup> October - Parents Evening (3:30pm – 5:00pm)
- ▶ SATs meeting
- ▶ SRE meeting

# SATs

- ▶ SATs week: Monday 14th to Thursday 17th May 2018
- ▶ English grammar, punctuation and spelling
- ▶ English reading
- ▶ Mathematics



## Health and Safety

- ▶ Please make sure we have up to date information.
- ▶ Orange Medical Bags.
- ▶ Accidents in school.
- ▶ Medicines.
- ▶ End of day routines.



**KNOWLES  
PRIMARY SCHOOL**

# Homework

- ▶ This will be launched at Parents Evening.
- ▶ Reading at home.

## Clubs

- ▶ After school club signup will be available through letters home.
- ▶ Sports clubs will need correct kit on those days.



**KNOWLES  
PRIMARY SCHOOL**

# Any Questions?